

Conference Video Wall 6 mm quality 121" high x 211" wide (243" diagonal)

Product Code: P6.4.7-26

Availability: 1000

Weight: 750.00lb

Dimensions: 3.00cm x 211.00cm x 121.00cm

Price: \$24,503.00



Short Description

A stage and podium and static until you add LED Video Wall to deliver dynamic content behind it. 24/7 customer service and a 3 year manufacturer warranty.

Description

What is a conference stage and podium without an LED Video Wall delivering your brand and your message? The simple answer, is a place to take a quick nap. The largest TV's are not big enough and printed graphics, as a backdrop are static and boring. Electrify your next conference and capitalize on the reason you are there, which is to engage and educate those that took the time to visit. You have their interest when they walk in the door, but don't lose it because you know the result if you do. LED Video Walls are high impact, high-end and are extremely simple to connect too and we can cover the walls, even the ceiling, create shapes, twists and even 3Dimensional content to make your next conference an experience that people talk about..

This is 243" on the diagonal. It's huge! Make your conference stand apart from the rest. LED Wall Panels are changing the entire landscape of how different media is viewed in many different venues. Seamless interlocking systems are quickly taking over the large format video world because of their ability to exceed the size of LCD/Flat Panel TV production capabilities and now their quality levels are undeniably gorgeous.

This system can be easily expanded. There is no TV on the market today, that you can make larger. You end up having to buy a new one. This system can be increased in size later simply by adding seamless panels to it. The is a 4 panel x 7 panel system that make up this 243" diagonal screen. You can easily upgrade this later and turn this into a 6 panel

x 9 panel system. The video controller is still the same so you only need to add the panels. It is simple.

This system not only allows you to push up cable or Directv content, it also allows you the ability to add up to 12 different inputs/delivery methods such as computer for youtube viewing, online movie streaming and the list goes on. This system is complete pricing which means it comes with the LED wall panels, the video controller, cables (both CAT5 and Power) as well as all of the mounting hardware needed.

If installation is needed, we have local techs and can estimate all costs up front so there are no hidden fees for your budgeting purposes. We also offer service plans to maintain your system to ensure you are get the most life out of your system. Just call us and ask for a free installation or service estimate.

Don't be fooled by manufacturers that do not offer warranties and long term service plans. We partner with our customers and are proud of how we serve focused on a long term and ever evolving future. We help our customers achieve the most out of their systems.

ITEM SPECIFICATIONS:

1. This is a 6mm system, which means the distance between each LED is 6mm so attendees should be 25' or more, away for optimal image clarity.
2. These panels can hot swap. This is an important cost saving fact. Many competing systems do not hot swap. Hot swap means if, for some reason something struck and damaged a panel and it needed replacing, hot swap allows you to just remove that one panel without having to take all the panels above it apart. This saves a lot of labor time and more importantly labor costs when replacing.

When buying from LED Tranquility you get the following with your system:

1. 3 year manufacturer warranty (INCLUDED) on all equipment (specific to manufacturing defects)
2. 24/7 customer service by phone (INCLUDED) with any of our trained LED Tranquility technicians (for the life of the product)
3. A hot swap system (INCLUDED) of superior quality that saves you money long term
4. Peace of mind that you bought from a great US based company that is here to support you

These systems come with full installation instruction and can be installed by experienced A/V technicians. **IF YOU WANT LED TRANQUILITY TO INSTALL THIS SYSTEM FOR YOU (HIGHLY RECOMMENDED) PLEASE CALL FOR AN ESTIMATE AS ESTIMATES FOR INSTALLATION ARE BASED ON LOCATION AND CANNOT**

BE PRICED THROUGH A WEBSITE.

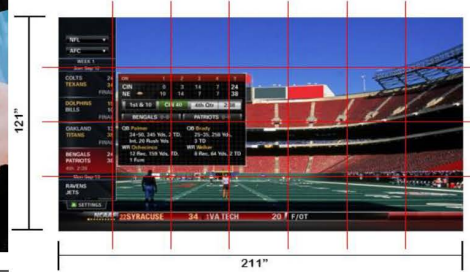
Specifications

LED VIDEO WALL (6 mm quality) - INDOOR CONFERENCES



EXAMPLE

Add or subtract panels to make any size needed!



Individual Panels

Per Panel Specifications

Category	Specification	Value	Category	Specification	Value
Cabinet	Size	30.2362 inch x 30.2362 inch	Screen and Control System	LED Expected Life	greater than 100,000 hours
	Resolution	128 dots x 128 dots		Input Voltage	120V 1p to 220v 3p
	Weight	24.25 pounds		Input Frequency	50/60Hz
LED Module	Pixel Pitch (mm)	6mm		Power Consump	Max: 450w Avg: 150w
	Pixel Density	27778		Refresh Rate	greater than 240Hz
	Brightness	greater than 1400		Frame Rate	greater than 60 frames/sec
	Module Size	7.5591 inch x 7.5591 inch		Defect Rate	less than .0001
	Resolution	32 x32		Humidity	0 - 90%
	Weight	0.6614 pounds		Control Method	Video Processor or Comp
	Pixel Config	1R1G1B		Way of Drive	1/16 scan
	Connector	Linco Brand		MTBF	greater than 50,000 hours
	LED Lamp	SMD3528		Color Temp	6500K
	Driver IC	MB15124		Color	greater than 16.7 million
Control System	Power Supply	G-energy		Support Mode	VGA, 800x800 display
	Viewing Angle	140 degrees		Control Distance	400 feet (optical up to 3 miles)
	Brightness	greater than 1400	Operating Platform	WINDOWS (98, 2000, XP, 7)	
	Brightness Adjust	Manual, 256 level; Auto 8 level			
	Grey Scale	256 Shades Per Color			
	Grey levels	16 bits			
Operating Temp	neg 20 Fahr to pos 140 Fahr				



Signal Connection

Power Connection



LED Tranquility[®]
THE TRUSTED SOURCE OF VIDEO WALL TECHNOLOGY