

# Concert Video Wall 5.95 mm quality 79" high x 138" wide

**Product Code:** P5.95.4.7-100

**Availability:** 1000

**Weight:** 750.00kg

**Dimensions:** 0.00cm x 0.00cm x 0.00cm



**Price:** \$33,170.00

## Short Description

The ultimate large format digital LED video wall. Make your concert memorable for your attendees! 24/7 customer service and a 3 year manufacturing warranty.

## Description

If you are a band trying to make it, an up and coming DJ on the cusp of getting nationally recognized, or a sporting event that has to deal with the elements of being outside, you need to be entertaining on all levels. You need to be seen even by the people holding the cheapest tickets. It's a way to show them you thought about them as well. Thinking about the little guy helps build and distinguish you, not only as a great performer or sports entity, it establishes you as a brand. A brand that wants to put on the best show ever. This doesn't have to be extremely costly. Capitalize on the money you're already dividing with the venue, security, and other vendors, and add the ability to be seen from everywhere in the venue. The entire point of a event such a concert or sporting event is to grab the attention of the attendee and make them a loyalist. If you are not seen by the people in the cheap seats, how do you intend on doing that without LED? LED Video Walls are high impact, high-end and are extremely simple to connect too and we can cover your existing billboard with an experience that people talk about..

This is roughly an 7' x 12' example of a system in 5.95mm quality to give you a taste of a complete systems price point. It's huge, waterproof and extremely vibrant! Call us and we can quote you on the exact size you need. LED Wall Panels are changing the entire landscape of how different media is viewed. Seamless interlocking systems are quickly taking over the large format video world because of their ability to deliver video content on the largest format over any other system seamlessly and now their quality levels are

undeniably gorgeous.

This system can be controlled up to 3 miles away directly, or over the web from anywhere.

If installation is needed, we have local techs and can estimate all costs up front so there are no hidden fees for your budgeting purposes. We also offer service plans to maintain your system to ensure you get the most life out of your system. Just call us and ask for a free installation or service estimate.

Don't be fooled by manufacturers that do not offer warranties and long term service plans. We partner with our customers and are proud of how we serve focused on a long term and ever evolving future. We help our customers achieve the most out of their systems.

#### ITEM SPECIFICATIONS:

1. This is a 5.95mm system, which means the distance between each LED is 5.95mm so attendees should be 25' or more, away for optimal image clarity.
2. These panels can hot swap. This is an important cost saving fact. Many competing systems do not hot swap. Hot swap means if, for some reason something struck and damaged a panel and it needed replacing, hot swap allows you to just remove that one panel without having to take all the panels above it apart. This saves a lot of labor time and more importantly labor costs when replacing.

When buying from LED Tranquility you get the following with your system:

1. 3 year manufacturer warranty (INCLUDED) on all equipment (specific to manufacturing defects)
2. 24/7 customer service by phone (INCLUDED) with any of our trained LED Tranquility technicians (for the life of the product)
3. A hot swap system (INCLUDED) of superior quality that saves you money long term
4. Peace of mind that you bought from a great US based company that is here to support you

These systems come with full installation instruction and can be installed by experienced A/V technicians. **IF YOU WANT LED TRANQUILITY TO INSTALL THIS SYSTEM FOR YOU (HIGHLY RECOMMENDED) PLEASE CALL FOR AN ESTIMATE AS ESTIMATES FOR INSTALLATION ARE BASED ON LOCATION AND CANNOT BE PRICED THROUGH A WEBSITE.**

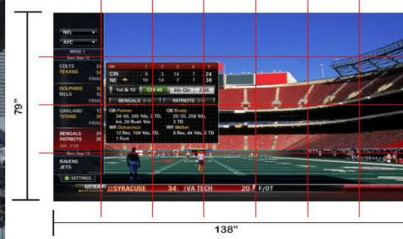
#### **Specifications**

# LED VIDEO WALL (5.95 mm quality) - OUTDOOR CONCERT



EXAMPLE

Add or subtract panels to make any size needed!



## Per Panel Specifications

Cabinet	Size	19.685 inch x 19.685 inch	Screen and Control System	LED Expected Life	greater than 100,000 hours
	Resolution	84 dots x 84 dots		Input Voltage	120V 1p to 220V 3p
	Weight	33 pounds		Input Frequency	50/60Hz
Pixel Pitch (mm)	5.95 mm	Power Consump		Max: 900w Avg: 300w	
Pixel Density	28246	Refresh Rate		greater than 1920Hz	
Brightness	greater than 6000	Frame Rate		greater than 60 frames/sec	
Module Size	9.8425 inch x 9.8425 inch	Defect Rate		less than .0001	
Resolution	42 x 42	Humidity		0 - 90%	
Weight	1.5432pounds	Control Method		Video Processor or Computer	
Pixel Config	1R1G1B	Way of Drive		1/7 scan	
Connector	Linco Brand	MTBF		greater than 50,000 hours	
LED Lamp	SMD3535	Color Temp		6500K	
Driver IC	MB15124	Color	greater than 16.7 million		
Power Supply	G-energy	Support Mode	VGA, 800x800 display		
Viewing Angle	140 degrees	Control Distance	400 feet (optical up to 3 miles)		
Brightness	greater than 6000	Operating Platform	WINDOWS (98, 2000, XP, 7)		
Control System	Brightness Adjust	Manual, 256 level; Auto 8 level			
	Grey Scale	256 Shades Per Color			
	Grey levels	16 bits			
	Operating Temp	neg 20 Fahr to pos 140 Fahr			

Individual Panels



Signal Connection

Power Connr



**LED Tranquility**<sup>®</sup>  
THE TRUSTED SOURCE OF VIDEO WALL TECHNOLOGY